

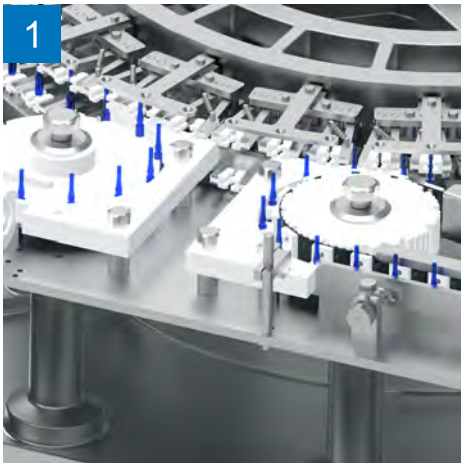
Kambert



KGRW
ROTARY AMPOULE WASHING MACHINE

KGRW

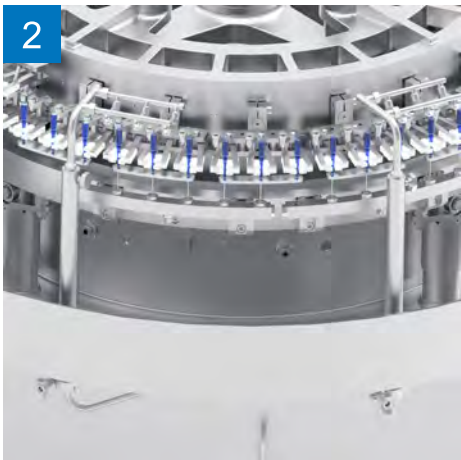
Kambert, a leader in high-technology pharmaceutical machinery, presents the Kambert KGRW ampoule washing machine. This high-precision model meets rigorous sterility and hygiene standards, offering enhanced operational ease, faster throughput, and reliable high-speed performance - all within a compact design that boosts productivity and reduces costs.



1. PRECISE AND GENTLE TRANSPORTATION OF AMPOULE

The V-grippers in the revolving conveying system use silicon rubber contact parts for a firm grip without scratching or contaminating containers.

The minimized contact area ensures precise centering of ampoules, allowing non-contact insertion of spray nozzles during cleaning, even while in motion, for faster throughput.



2. INTERNAL AND EXTERNAL CLEANING

Cleaning stations are directly connected to the cleaning media supply to reduce particles and simplify maintenance.

WFI, purified water and air cleaning are synchronized with ampoule movement, using media only when needles move forward. WFI is recirculated for reuse to minimize consumption.

STANDARD FEATURES

- | Contact parts SS 316
- | PLC with HMI Control with 6" touch screen
- | Out feed counting sensor
- | Digital pressure gauges
- | Re-Circulating water tank with Multi stage centrifugal pump & Heater
- | Polycarbonate upper guards with interlock
- | Filter housing without cartridge
- | 6 Internal & 3 External washing cycle (Recycle / Purify / WFI / Air)
- | Any one size of change part fitted with machine

OPTIONAL FEATURES

- | Contact parts SS 316L
- | PLC with HMI Control & Printing facility with 10" Touch screen
- | "Additional water tank with Pump for WFI"
- | Additional water tank with Pump for Purified
- | Automatic draining system
- | Change part set

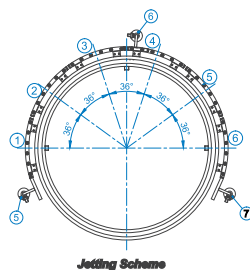
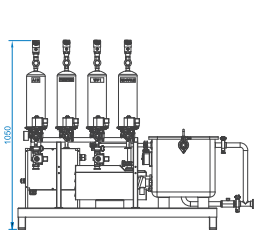
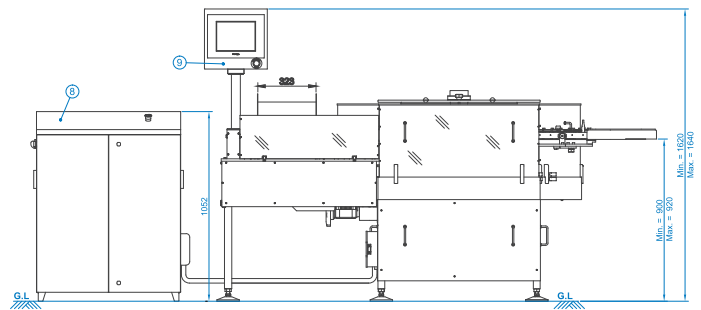
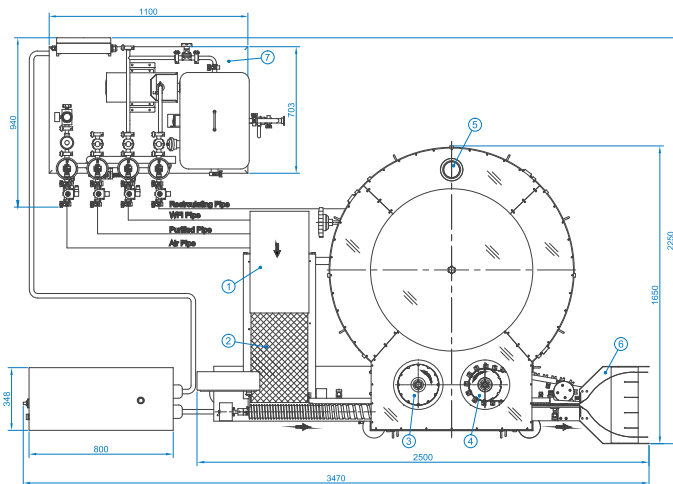


KGRW
ROTARY AMPOULE WASHING MACHINE

TECHNICAL SPECIFICATIONS

MODEL		KGRW-20x3	KGRW-20x4
Number of Grippers		60	80
Max Rated Output Ampoule / Minute*		300	400
Re-Cycle Water Tank Capacity		50 Ltr	
Ampoule Range	Diameter	9 to 17	
	Height (Open Ampoule)	60 to 105	
Electric motor	Main motor	1.5 hp	
	Recycle-Pump	1.5 hp	
	Conveyor motor	0.25 hp	
Utility	Electric	3 Phase, 415V, 50 Hz	
	Power	7.6 / 10.7 kW/hp	
	Compressed air**	20 CFM at 4Kg/cm2	25 CFM at 4Kg/cm2
	Water**	Re-Cycle Water : 200 to 250 Ltr/Hour at 3 Kg/cm2	Re-Cycle Water : 300 to 350 Ltr/Hour at 3 Kg/cm2
		(If use WFI Water at Re-Cycle station than no water req.)	(If use WFI Water at Re-Cycle station than no water req.)
	Purified Water : 200 to 250 Ltr/Hour at 3 Kg/cm2	Purified Water : 300 to 350 Ltr/Hour at 3 Kg/cm2	
	WFI Water : 200 to 250 Ltr/Hour at 3 Kg/cm2	WFI Water : 300 to 350 Ltr/Hour at 3 Kg/cm2	
Overall Dimensions-mm		2500W x 1650D x 1640H (For Machine)	2360W x 2250D x 1640H (For Machine)
		1100W x 940D x 1050H (For Water & Air Unit)	

* Depending upon the ampoules size & quality. ** Depending upon the ampoule size. Kambert reserves right to make any changes in the catalogue without intimation.



1. Charging Hopper
2. Charging Conveyor Belt
3. Feeding Wheel
4. Discharging Pulley
5. Vapour Exhaust Port
6. Discharging Hopper
7. Water and Air Unit
8. Electric Panel
9. Swing Control Panel

Spraying Sequence

1. Recirculating Water (Internal & External)
2. Compressed Air (Internal)
3. Purified Water (Internal)
4. WFI Water (Internal & External)
5. Compressed Air (Internal)
6. Compressed Air (Internal & External)

Kambert

Kambert Machinery Co. Pvt. Ltd.

79/4, Phase - 1, GIDC Vatva, Ahmedabad - 382 445. (INDIA)

+91 - 079 - 2583 4041 | +91 - 97277 48801

Web: www.kambert.com | Email: info@kambert.com